



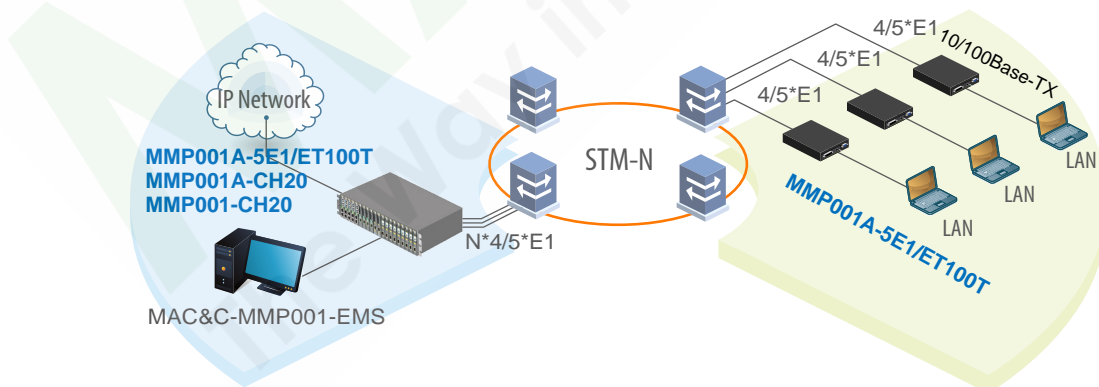
MMP001A-5E1/ET100T MMP001A-5E1/ET100S

EoPDH

Ethernet 4 5 1

4, 5 1 - VCAT 1 - LCAS - Ethernet - GFP, VCAT
IP/Ethernet N*E1 PDH / SDH
1=-43 0,6 2
Ethernet (1~4/5)* 1 (1,984~9,92) / BERT
GFP , VCAT LCAS MMP001A
CLI WEB SNMP

1	CCS+CRC	IEEE 802.3, 802.3u
	ITU-T G.703/G.704/G.706/G.732/G.823	10 / , 100 /
	2,048 / ± 50 ppm, 4 5 1	RJ-45
	HDB3	MTU 2046
	-43	Power, ALM, E1 LOS, E1 Alarm (AIS, LOF, RAI, LOMF)
	75/120	LAN Link/ACT, 10/100M, SD (100Base-X)
	ITU-T G.823	12
	ITU-T G.703	< 6
	2,37/3,0 ± 10%	155 88 21 ()
	220	130
RJ-45/BNC	0 ~ 50 ° () -10 ~ 70 ° ()	
	10~90%	
	65000	



MMP001A-5E1/ET100T	10/100Base-TX	4	5*E1, GFP/VCAT/LCAS
MMP001A-5E1/ET100S	100Base-X	4	5*E1, GFP/VCAT/LCAS

MMP001A-5E1/ET100□
:MMP001A-5E1/ET100T



RJ-45